

Spring, 2024

# Research Newsletter



**NHS**  
Mersey and West Lancashire  
Teaching Hospitals  
NHS Trust

NIHR | National Institute for  
Health and Care Research



## Why take part in research?

We can make faster improvements to people's health and care if more people take part in research. There are a range of reasons that people choose to participate in research:

- To improve health and social care for others, as well as giving hope for future generations
  - To learn more about their condition
  - To try a new treatment or device
- To be more closely and regularly monitored by health and care professionals
  - To help researchers learn important new information

[How to take part \(nihr.ac.uk\)](https://www.nihr.ac.uk)

## Recent Staff Publications

Long-term assessment of the NHS hybrid closed-loop real-world study on glycaemic outcomes, time-in-range, and quality of life in children and young people with type 1 diabetes.

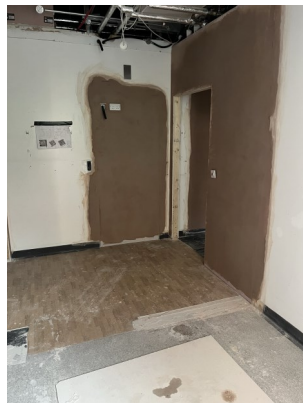
[Ng, S.M., Wright, N.P., Yardley, D. \*et al.\* Long-term assessment of the NHS hybrid closed-loop real-world study on glycaemic outcomes, time-in-range, and quality of life in children and young people with type 1 diabetes. \*BMC Med\* \*\*22\*\*, 175 \(2024\).](#)

# Ormskirk & Whiston Research Hubs

## What is the Research Hub?

It is an area dedicated to seeing people who are taking part in research within the Trust (research participants). It is conveniently located in the main hospital sites in Ormskirk and Whiston. The area in Ormskirk consists of a waiting room, clinic room and storage area.

The intention is to provide a pleasant environment in which to see our research participants during their appointments. The area will be a clean, comfortable and relaxing environment. It will also offer participants, the family or carers comfy chairs, easily accessible toilets and access to refreshments.



**Ormskirk**



**Whiston**

## What are the benefits of the Research Hub?

We will have our own fully equipped/dedicated space where patients can be seen without having to borrow space from other departments. It also means that people who are coming for more than one visit will be able to be seen in the same space without having to find a different location at subsequent appointments. It also means we have more flexibility about when we can arrange for research participants to come for their appointments to better fit in with them.

# Events & Achievements

## EDGE Conference

Julie and Emma attended the EDGE conference in Birmingham in April to find out more about the system and how we can make changes to how we use EDGE.

The two day event has been extremely beneficial for information so we will be able to utilise the system and make the most of it by sharing this knowledge with the rest of the team!

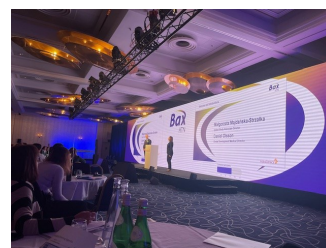


---

## Trip to Munich

Jennie Procter visited Munich in April to attend an Investigator meeting for Bax HTN study - A Randomised, Double-Blind, Placebo-Controlled, Parallel Group Study to Assess the Efficacy and Safety of Baxdrostat in Participants with Uncontrolled Hypertension on Two or More Medications including Participants with Resistant Hypertension.

She reported “This was such a such a valuable trip. It was a great opportunity to meet the Astra Zeneca team as well as other colleagues involved in the trial. This gave us the chance to share and learn from each other’s experiences of the study so far.”



---

## Research Bus

A day well spent with the quality bus advertising Bax Hypertension at Whiston.

This is a study to Assess the Effect of Baxdrostat on the Reduction of Systolic Blood Pressure in Participants with Resistant Hypertension.



---

## TILIA Star of the Week!

This goes to Dr Ascanio Tridente and team at Whiston who have randomised 3 more patients in March and April!



## Inflammatory Bowel Disease (IBD) Gastro Educational Evening - Thursday 8th February 2024

The MWL Research Department organised an Education Evening on Inflammatory Bowel Disease (IBD).

This took place on Thursday 8th February 2024 at The Village Hotel in Whiston. The event was attended by Consultant Gastroenterologists from across the Trust, Gastroenterology Trainees, Dietitians and IBD Nurse Specialists and members of the MWL Research Department.

Guest presenters were Dr Rajiv Chandy, Dr Katie Clark, Dr Ascanio Tridente and Research Manager Jeanette Anders.

Topics included -

Overview / Drug Selection in IBD

Managing IBD and Pregnancy

The benefits of taking part in Research

It was a great opportunity to share and discuss the latest developments in Gastroenterology Research. Thank you to all who attended!

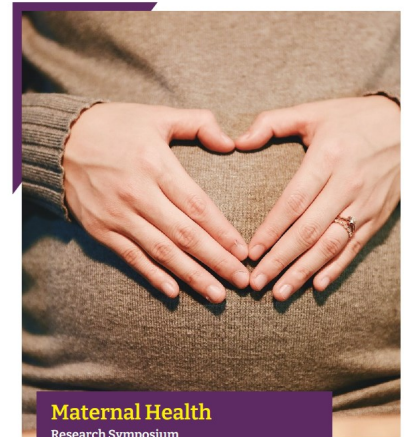


## Maternal Health Research Symposium



The Maternal Health Research Group invite you to come along and see PhD students and staff showcasing their research relating to maternal health.

Topics covered throughout the morning include experiences of black pregnant women, type 2 diabetes remission, nutrition and miscarriage, nutrition education for student midwives, online maternal health provision, gestational diabetes and yoga, post-natal PPI and more.



**Maternal Health**  
Research Symposium

16 May 2024  
H2, Faculty of Health, Social Care and Medicine

Click below to book:

### When

Thursday 16 May 2024  
9.15am - 12pm

### Cost

Free

### Where

H2, Faculty of Health,  
Social Care and Medicine

### Organiser

Health Research Institute





## What is the Clinician Researcher Credentials Framework?

It's for experienced healthcare practitioners from all professional backgrounds who want to take on leadership roles in clinical research delivery.

It's a national framework of Master's level qualifications, working with the Academy of Medical Royal Colleges (AoMRC), the Royal College of Physicians (RCP) and universities to develop it.

The framework aims to give you the skills and confidence to lead and support clinical research studies. It focuses on the practical elements of clinical research delivery.

There are two key elements:

1. Online modules - flexible access to theoretical modules that provide an insight into the delivery of clinical research.
2. Research Practice Experience (RPE) – practical modules where learners put their learning into practice by working on clinical research studies under the supervision of a senior researcher.



Click [here](#) to register for updates.

# Recruitment Update & Achievements

## Recruitment Figures for MWL FY23/24

Speciality	Participants
Ageing	21
Anaesthesia, Perioperative Medicine and Pain Management	0
Cancer	53
Cardiovascular Disease	16
Children	2839
Critical Care	51
Dementias and Neurodegeneration	0
Dermatology	6
Diabetes	6
Gastroenterology	249
Genetics	76
Haematology	0
Health Services Research	13
Hepatology	5
Infection	22
Metabolic and Endocrine Disorders	12
Musculoskeletal Disorders	310
Neurological Disorders	0
Ophthalmology	5
Primary Care	3
Reproductive Health and Childbirth	345
Respiratory Disorders	7
Stroke	283
Surgery	13
Trauma and Emergency Care	7
<b>Grand Total</b>	<b>4342</b>

**In 2023-2024 we were the top recruiting site for:**

**Oxford Cognitive Screen - Visual Impairment Adaptation  
Visual scanning training for hemianopia (SEARCH)  
Melanoma Wide Excision Trial - MelMarT-II  
Molecular Genetics of Adverse Drug Reactions (MOLGEN)**





## **Involvement and Feedback**

The National Institute for Health Research places emphasis on the Patient Research Experience Survey (PRES). At all our sites we are using a number of methods for obtaining feedback, and value the patients' views on taking part in research.

**Here is some of the feedback we have received:**

"Hoping it will help others in the future"  
"Very helpful and kind research nurse"  
"Well explained"

 Experience of taking part: 

Friendly and caring staff.  
Positive experience.  
Helping others.  
Respect and care.



**Health Research Authority**

## The ROSETA Optimisation Trial

Breast cancer is the most commonly diagnosed cancer in women. Hormone therapies have improved outcomes for women with breast cancer, however, studies suggest that between 31-73% of women with breast cancer take their hormone therapy as prescribed. The ROSETA Optimisation trial is testing how well four ways (called interventions) support women with breast cancer in taking hormone therapy. We are testing what, if any, is the best combination of the interventions.

---



## Outcomes of Displaced Distal tibial fractures - Surgery Or Casts in KidS

Broken ankles in children often involve the area from which the bone grows – the growth plate.

The primary objective is to determine whether children treated with surgical correction have improved function compared with children treated with conservative care, as measured by the *Patient Reported Outcomes Measurement Information System (PROMIS) Mobility Score for Children* at two years post-randomisation.

---



## Hydrolysed Rice Formula Study

**Health Research Authority**

Cow's milk allergy (CMA) is one of the most common childhood food allergies, affecting ~2-5% of infants in Europe. It is defined as a reproducible, immune-mediated response to one or more of the proteins which mainly constitute whey and casein in cow's milk.

A double-blind, randomised-controlled trial evaluating a hydrolysed rice formula compared to a cow's milk protein-based extensively hydrolysed formula in infants with cow's milk allergy

---



## Bax24 Ambulatory Blood Pressure Monitoring Study

A Study to Investigate the Effect of Baxdrostat on Ambulatory Blood Pressure in Participants with Resistant Hypertension - Bax24

---

## Johnson&Johnson Anthem UC

A Phase 2b Multicenter, Randomized, Placebo-Controlled, Dose-Ranging Study to Evaluate the Efficacy and Safety of JNJ-77242113 for the Treatment of Moderately to Severely Active Ulcerative Colitis Efficacy and Safety of JNJ-77242113 in Participants with Moderately to Severely Active Ulcerative Colitis.



## Associate Clinical Research Practitioner

My name is Lydia Cropper

I am the new Associate Clinical Research Practitioner and I have been made to feel very welcome by the team I have met so far.

I have worked at Southport Hospital for almost 19 years, working for 13 years on ward 11b which is a gastroenterology ward as a Health Care Assistant. Then for the past 5.5 years I worked as a Discharge Facilitator for the patient flow team.

Although I have no direct experience working in clinical research it has always been of an interest to me. I have lots to learn but I know that I have a great team behind me who have made me feel very welcome and part of the team. I look forward to what this journey will bring and what I am going to learn.



## Zena's Retirement

Way back in 1986 I commenced my career with this Trust on Princess Elizabeth Ward (Paediatrics) at Southport General Infirmary (then they knocked the hospital down.....), from there to Children's Ward (4B) at Southport DGH and onwards to the brand-new Paediatric ED at Ormskirk in 2004

In 2007/8 I ventured into Research, and now some 16 years later I am off on my new adventure- retirement!

They have been an action packed few years in Research, we have worked through some exciting times and a pandemic; we have seen change, been part of change, and made a difference through the work we do.



Moira and I started our research careers with a study called MAGNETIC, which was most memorable for its case report form, which was somewhat more than complicated, but the study put Ormskirk on the map for Paediatric Research.

Now I am finishing on a high with the RADIANT Study and a global first for recruitment!

I will be taking a lot of happy memories away with me, the laughter, friendship, and support from everyone has been fantastic, you are simply the best!

**For any further information about items in this newsletter, please get in touch with us!**



Ormskirk Hospital Research Office  
Dicconson Way, Wigan Road  
Ormskirk  
L39 4QX  
Telephone: 01695 65 6506

RD&I Manager:  
Jillian Simpson 01704 703457  
[soh-tr.researchsonhs@merseywestlancs.nhs.uk](mailto:soh-tr.researchsonhs@merseywestlancs.nhs.uk)

Southport & Formby Hospital  
Research Office  
Town Lane, Kew,  
Southport, Merseyside,  
PR8 6PN  
Telephone: 01704 70 4939

RD&I Manager:  
Jillian Simpson 01704 703457  
[soh-tr.researchsonhs@merseywestlancs.nhs.uk](mailto:soh-tr.researchsonhs@merseywestlancs.nhs.uk)

Whiston Hospital Research Office  
Warrington Road, Prescott  
L35 5DR  
Telephone: 0151 290 4898

RDI Manager:  
Jeanette Anders 0151 478 7850  
[research@sthk.nhs.uk](mailto:research@sthk.nhs.uk)

