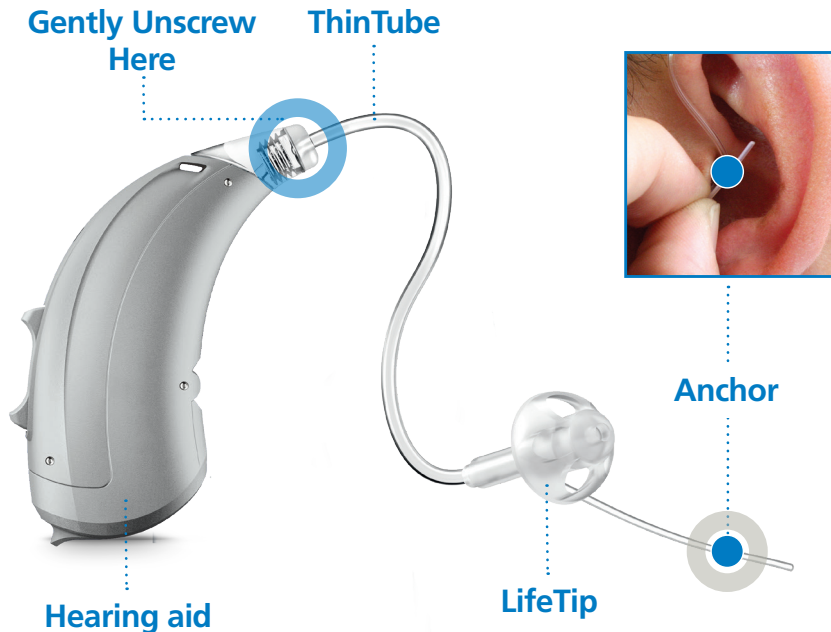


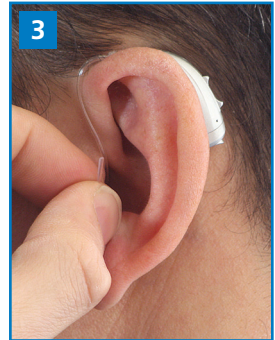
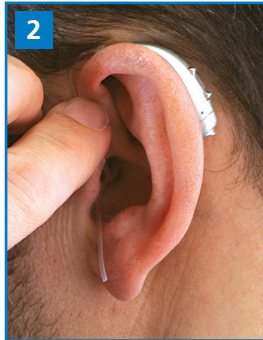
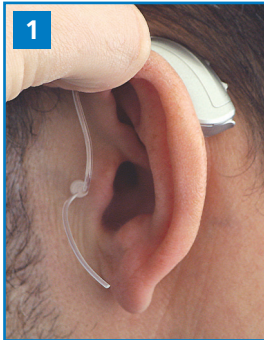
Life Tips/Moulds hearing aids

Putting your hearing aid in

- 1** Lift the hearing aid over the back of the ear to secure it into place.
- 2** Hold the LifeTip/mould between the thumb and forefinger and insert the LifeTip/mould into your ear canal. Gently work it into position to make sure it is firmly in your ear.
- 3** Take the anchor of the ThinTube and flick it into the bowl of your ear to improve the retention of the LifeTip. Turn the hearing aid on. For most life mould fittings the retainer is removed.



Putting your Life Tip/Mould in your ear



- 1** Place hearing aid over the back of the ear.
- 2** Apply pressure to the right angle bend of the tube in the direction of your nose. Push as far as is comfortable as the side of the tube should lie flush with the side of your face.
- 3** Swing the retainer backward into the bowl of your ear.